

# PRODUCT SETUP FACT SHEET



## WHAT IS BLEED?

When designing for print it is important to remember that it can be difficult to trim a job right on the edge of a design. In order to achieve the best result possible, you will need to extend your design past the trim lines, so the design can easily be cut down to size. The area that extends past your trim lines is called 'bleed'. In order to get the best results when designing for print, it's important to ensure your artwork always extends past the trim lines.



## BROCHURE

297x210mm

### GENERIC FACTS:

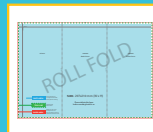
- Convert all text to outlines
- 2mm bleed requirement
- File provided in CMYK only
- Our recommended rich black break down in 40%C, 40%M, 40%Y, and 100%K
- Supplied as press ready PDF

### IMPORTANT DESIGN NOTES:

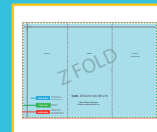
- As per industry standard colours may vary up to 5%
- For the best colour accuracy please refer to a Pantone colour guide and not your screen.

### PRODUCT SPECIFICS:

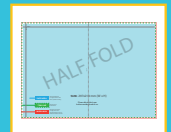
- Artwork size: 297mm x 210mm (WxH)
- Total size with bleed: 301mm x 214mm (WxH)
- Use of vector image recommended
- 2mm bleed requirement



Roll Fold  
page 2 & 3



Z Fold  
page 4 & 5



Half Fold  
page 6

297mm

210mm

97mm

100mm  
Back Cover

100mm  
Front Cover

ROLL FOLD

SIZE: 297 x210mm (W x H)

Please delete this layer  
before sending back to us.

**SAFE AREA**

Place important text or image inside this blue area to prevent trimming.

**TRIM LINE**

Artwork will be trimmed here.

**BLEED AREA**

Extend your artwork to the edge of this area. Text and Images on this red shaded area will be trimmed

This is a fold

This is a fold

2mm bleed

2mm bleed

2mm bleed

2mm bleed

297mm

210mm

100mm  
Inside Front Cover

100mm

97mm  
Back Cover

ROLL FOLD

SIZE: 297 x210mm (W x H)

Please delete this layer  
before sending back to us.

**SAFE AREA**

Place important text or image inside this blue area to prevent trimming.

**TRIM LINE**

Artwork will be trimmed here.

**BLEED AREA**

Extend your artwork to the edge of this area. Text and Images on this red shaded area will be trimmed

This is a fold

This is a fold

2mm bleed

2mm bleed

2mm bleed

2mm bleed

297mm

210mm

99mm

99mm

99mm  
Front Cover

Z FOLD

SIZE: 297 x210mm (W x H)

Please delete this layer  
before sending back to us.

**SAFE AREA**

Place important text or image inside this blue area to prevent trimming.

**TRIM LINE**

Artwork will be trimmed here.

**BLEED AREA**

Extend your artwork to the edge of this area. Text and images on this red shaded area will be trimmed.

297mm

210mm

99mm

99mm

99mm  
Back Cover

Z FOLD

SIZE: 297 x210mm (W x H)

Please delete this layer  
before sending back to us.

**SAFE AREA**

Place important text or image inside this blue area to prevent trimming.

**TRIM LINE**

Artwork will be trimmed here.

**BLEED AREA**

Extend your artwork to the edge of this area. Text and Images on this red shaded area will be trimmed

2mm bleed

2mm bleed

2mm bleed

2mm bleed

This is a fold

This is a fold

297mm

210mm

HAALF FOLD

This is a fold

**SAFE AREA**

Place important text or image inside this blue area to prevent trimming.

**TRIM LINE**

Artwork will be trimmed here.

**BLEED AREA**

Extend your artwork to the edge of this area. Text and Images on this red shaded area will be trimmed

**SIZE: 297 x210mm (W x H)**

Please delete this layer before sending back to us.